

Kenyon College

VILLAGE REVITALIZATION PHASE 2

DATE: 31 MARCH 2017

PROJECT: LEVEL 2 PLAN

201 008.00

ACHIEVE TRAINING  
47 HICKORY STREET  
617 255-6800  
617 577-8114 FAX



100% DESIGN DEVELOPMENT

DATE: 31 MARCH 2017

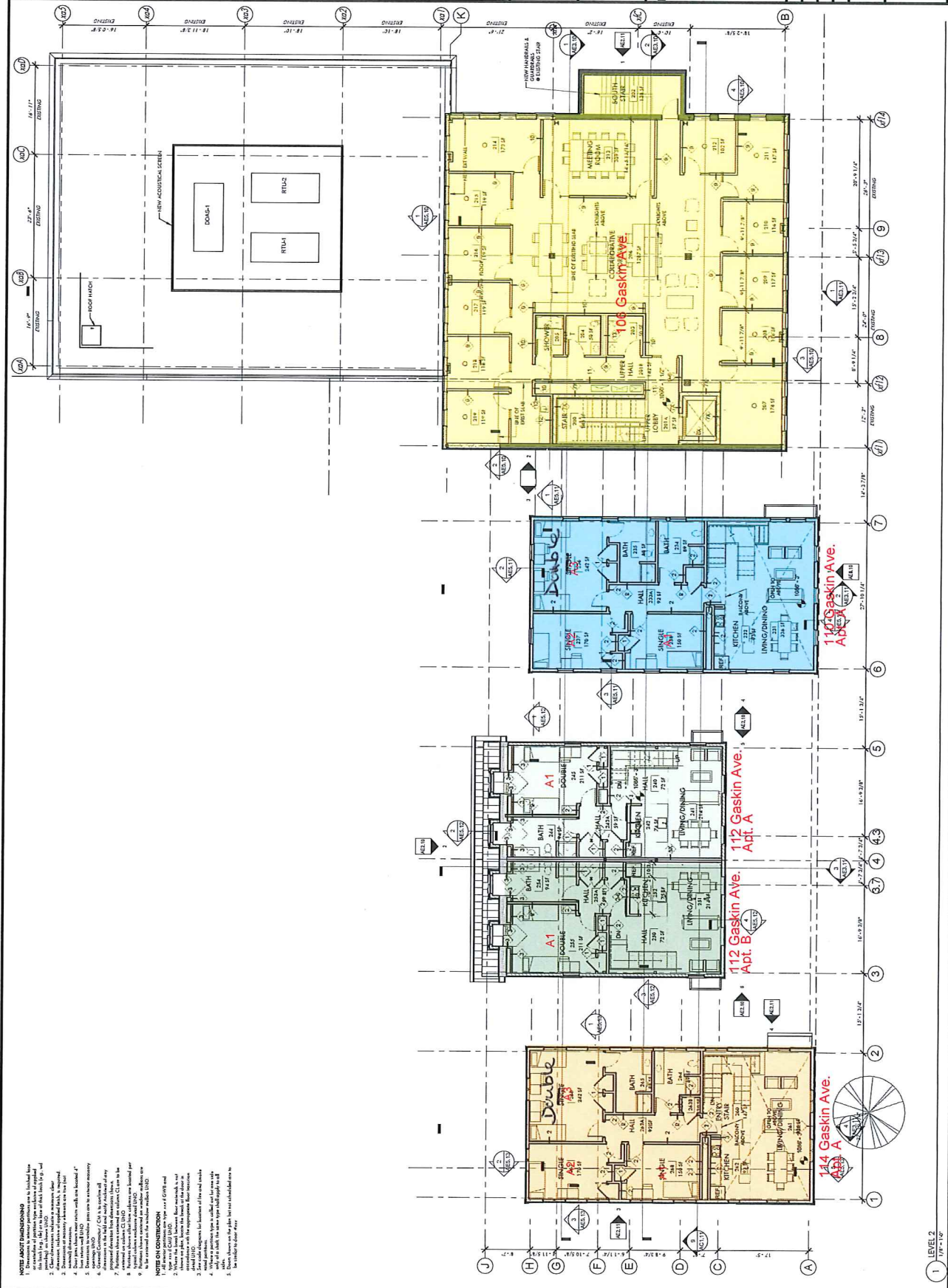
SCALE: As Indicated

DESIGNER: Author

CHECKER: Checker

PROJECT: LEVEL 2 PLAN

AE1.12



**NOTE: REVISIONS**

1. Dimensions to interior partitions are to finished base line (1/2" = 1'-0") unless otherwise noted.
2. Clearances to exterior partitions are to exterior face unless otherwise noted.
3. Dimensions of structural elements are to true face.
4. Door swing is shown with arc and handle.
5. Dimensions to window panes are to exterior face.
6. Dimensions to window panes are to exterior face.
7. Dimensions to window panes are to exterior face.
8. Dimensions to window panes are to exterior face.
9. Dimensions to window panes are to exterior face.
10. Dimensions to window panes are to exterior face.

**NOTE ON CONSTRUCTION**

1. Use steel for all structural steel.
2. Use steel for all structural steel.
3. Use steel for all structural steel.
4. Use steel for all structural steel.
5. Use steel for all structural steel.
6. Use steel for all structural steel.
7. Use steel for all structural steel.
8. Use steel for all structural steel.
9. Use steel for all structural steel.
10. Use steel for all structural steel.

2nd floor

Kenyon College

VILLAGE  
REVITALIZATION  
PHASE 2B

**CONTRACT NOTES:**

1. All dimensions are to face unless otherwise noted.
2. All dimensions are to be confirmed by the contractor.
3. All dimensions are to be confirmed by the contractor.
4. All dimensions are to be confirmed by the contractor.
5. All dimensions are to be confirmed by the contractor.
6. All dimensions are to be confirmed by the contractor.
7. All dimensions are to be confirmed by the contractor.
8. All dimensions are to be confirmed by the contractor.
9. All dimensions are to be confirmed by the contractor.
10. All dimensions are to be confirmed by the contractor.
11. All dimensions are to be confirmed by the contractor.
12. All dimensions are to be confirmed by the contractor.
13. All dimensions are to be confirmed by the contractor.
14. All dimensions are to be confirmed by the contractor.
15. All dimensions are to be confirmed by the contractor.
16. All dimensions are to be confirmed by the contractor.
17. All dimensions are to be confirmed by the contractor.
18. All dimensions are to be confirmed by the contractor.
19. All dimensions are to be confirmed by the contractor.
20. All dimensions are to be confirmed by the contractor.



**GUND PARTNERSHIP**  
ARCHITECTURE | PLANNING  
47 THORNHURST STREET  
COLUMBUS, OH 43215  
617.552.6800  
617.577.6114 FAX



PROJECT	Kenyon College	DATE	7.28.2017
NO.	2	DESCRIPTION	REVISED
BY	ARCHITECTURE	DATE	8.02.2017

**CONSTRUCTION DOCUMENTS**

DATE: 11 AUG 2017

SCALE: As indicated

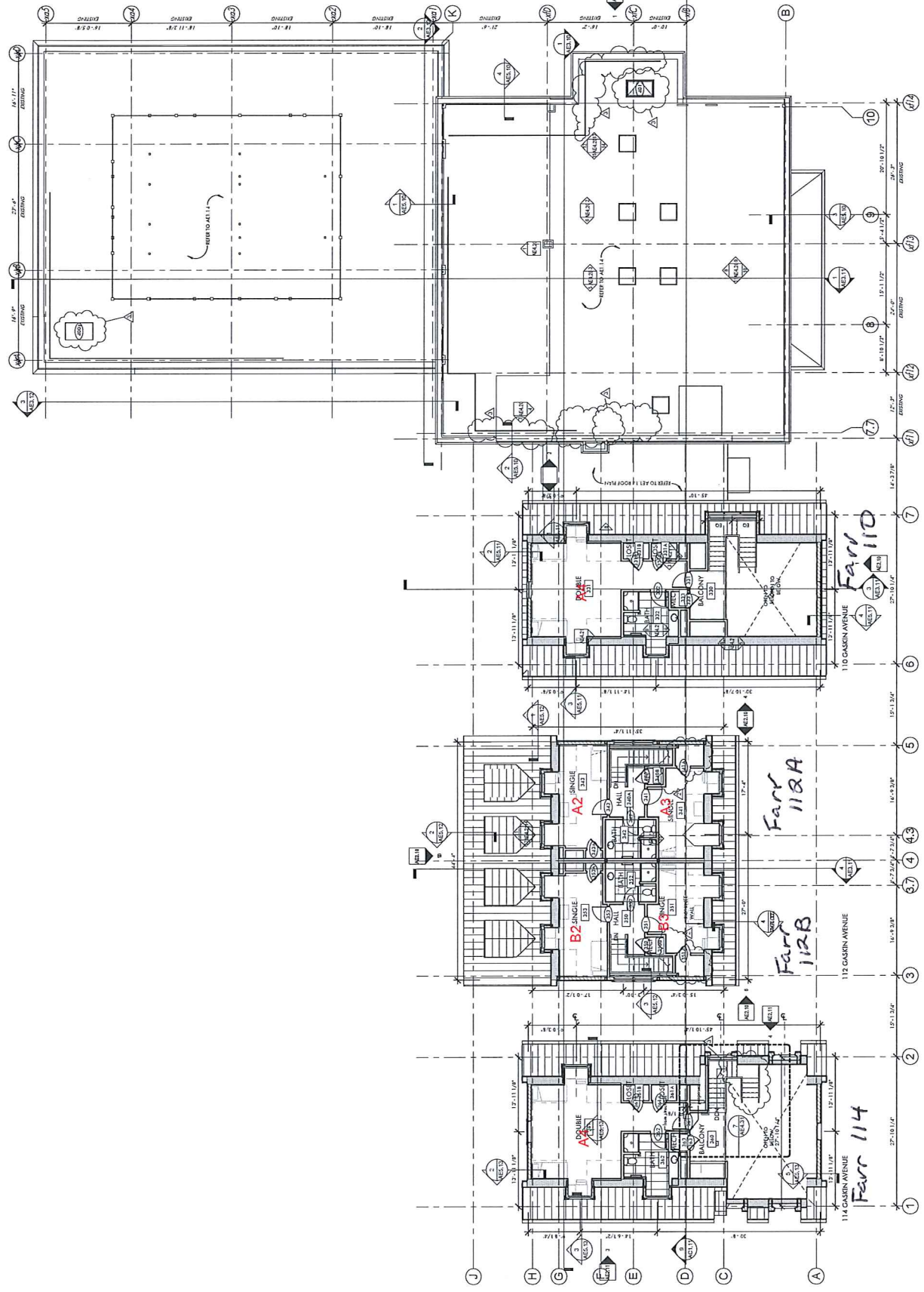
DRAWN BY: Author

CHECKED BY: Checker

PROJECT: LEVEL 3 PLAN

SHEET NUMBER: 201.00A.00

**AE1.13**



1 LEVEL 3 PLAN  
1/8" = 1'-0"

3rd floor